



GALESS AC meeting June 29, 2026

14:00 – 19:00

Hotel Przy Mlynie

Rybnik, Poland

Agenda

- 14:00 Opening, welcome. Agenda check & control
- 14:10 Introduction Live @table & Virtual members/participants
- 14:30 Short Review 25/26

Tea intermezzo – Melbourne intro GALESS Conference 2026

- 15:00 Presentation China GALESS Conference 2027
- 15:30 Presentation Indonesia GALESS Conference 2027
- 16:00 Presentation South Africa GALESS Conference 2027

16:30 Tea-Snack-break

- 17:00 Installation New Jury Board
- 17:15 AI for Sustainable Solutions program 27/28
- 18:30 Schools/ conference directions 28/29
- 19:00 Dinner

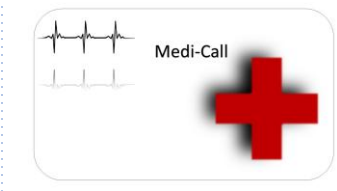




Thematic Research Areas



2024



2022



2023



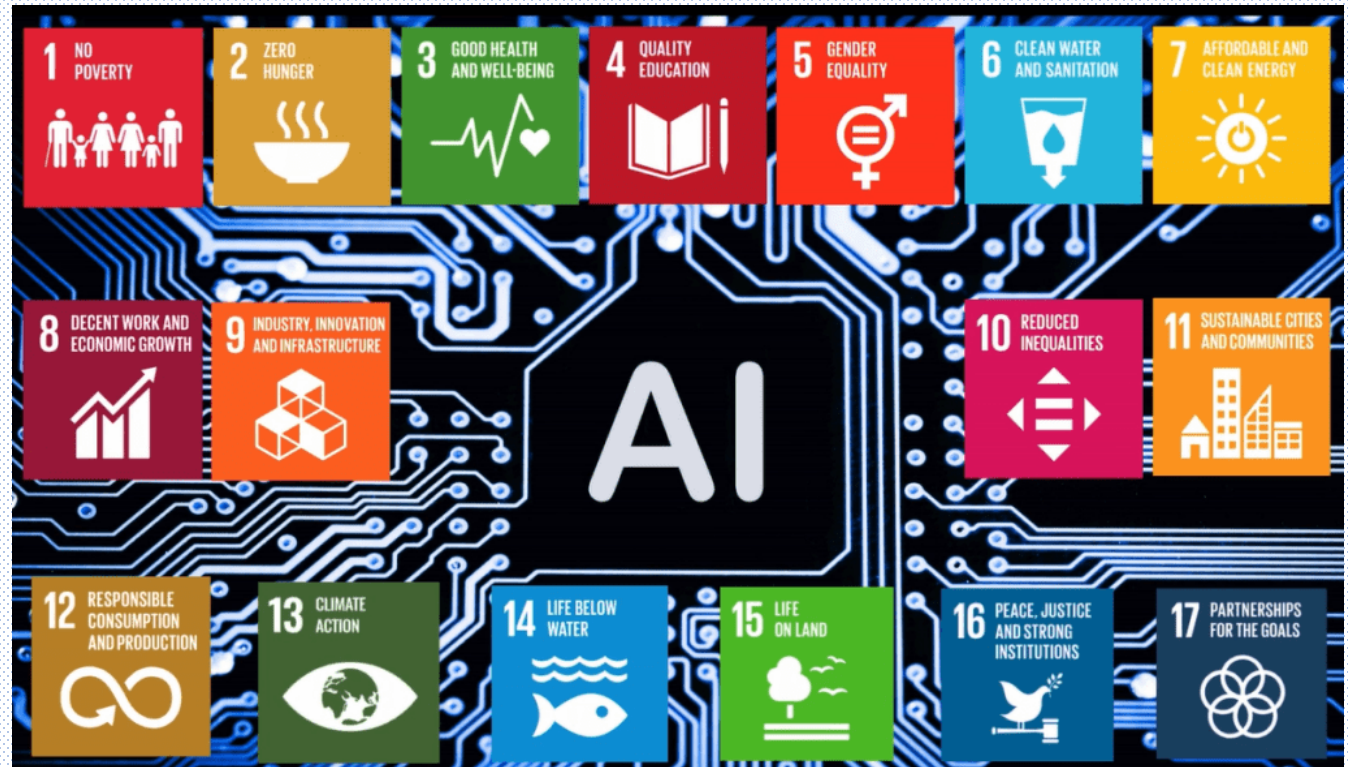
2025

2026





Minorities

2027-2028





App - GALESS - Our Team

<p>MSc Ann Marie Shields Bradenton, USA Education Advisor</p> 	<p>Prof. Cristina Roscoe Vianna Varginha, Brazil CEFET (Federal Centres for Technological Education),</p> 	<p>Prof. Wim Uijtewaal Delft, The Netherlands TU Delft</p> 	<p>Prof. Sandra Gilchrist Sarasota Head Science Department New College Florida</p> 
<p>Bartosz Sobik Warsaw, Poland Education Advisor Energy Transition</p> 	<h1>GALESS Jury Board 2026</h1>		

10°C Lichte regen | Search | 1:49 PM 5/13/2026



Video Announcement GALESS Jury Board. Prof. Wim Uijtewaal

https://www.gales.org/appgls/data/assets/134_video1541142400.mp4



AI for sustainable solutions Subject Listing

- Climate modelling and prediction
- Data accuracy and quality AI driven solutions
- Improving healthcare and medical treatments
- Precision agriculture
- Wildlife conservation and monitoring
- Air and water quality monitoring
- Waste management and recycling
- Marine ecosystem protection
- Disaster preventing and anticipating
- Carbon capture and sequestration
- Renewable energy
- Energy efficiency and smart grids
- Transportation and automotive efficiency
- Smart construction and building optimization
- UN Sustainable development goals in AI perspective
- AI solutions versus traditional approaches
- School and curriculum
- Supporting decision making and risk analysis
- AI and enhancing human abilities
- Sustainable poverty alleviation

Reliable
Independent
Sustainable
Vulnerable
Efficient
Actual
Level
Fraud sensitive

Quality of work
Efficiency
Improving diagnoses
Smart assistants
Data-analysis
Adaptive solutions
Automated processes



- GALESS is involved in research regarding projects with sustainable development and goals (SDG's),
- GALESS will instill awareness in students of actual issues facing humanity across the globe,
- GALESS Jury Board develops a Thesis within the Thematic Approach 27/28 “ AI for sustainable solutions” in cooperation with schools organizing a GALESS conference,
- A list of possible research subjects for conferences within the Thematic Approach 27/28 is available on request,

General guidelines for research activities 27/28 from the GALESS Jury Board.

- A wide variety of new AI based/ driven- applications can improve the quality of lives of many people,
- We ask our young student community to have a critical eye regarding this development within the subject connected to the conference,
- Involve / add ethical thinking and evidence based practice, positive and/or negative, when available, with AI developments as they are presented in your local society and subject-research area,
- Meet with people who have experience with AI applications in their day to day work , interview them and ask them about the reliability of their experiences regarding AI,
- Based on interviews and research: try to formulate added value(s) with AI implementations, involve remarks & ideas to structure them in terms of challenges or threats,
- Try to find out how any support of AI in the cases you investigated behaves in a long term – sustainable – approach,
- How would you suggest to monitor the results of AI applications in the future,
- How would you suggest to (re)educate people within your research subject, and how is education secured and consolidated in this dynamic AI environment,
- Add context-awareness, and usability in your research-case in the light of international implementations,



Galess Database Entity Summary

- Activity (conference or other GALESS related activity)
- Learning Experiences (projects)
- Users-students , User levels & user groups
- Guiding Staff (Teachers-Living Libraries-etc) User levels & user groups
- School (as virtual entity)
- Jury members & jury groups
- Assessments
- Certificates
- Abstracts & Research Reports
- Assets
- News Entity

Main engine: connecting users to research-reports

Galess Website www.galess.org

- Connection to GALESS database
- Orientation: consultancy connected to GALESS projects
- User levels connected to login levels
- Communication by way of GALESS frontdesk (info@galess.org)
- Hosted by STRATO (German / Dutch link)
- Connected to mail- & storage-facility



GALESS Conference Concepts 2027 2028

Research activities- research.report- presentations, certificate, book

Range: 8 – 10 schoolteams

- Organized by one school, educational institution
- Organized by two schools,
- Organized by schoolnetwork,
- Organized by expertise center related to thematic areas GALESS
- Organized virtually (*low priority*)
- Organized in “live” *and* virtual setting
- Organized in a workshopdevelopment/workshop-presentation-model
- Organized in a “time interval” model
- Organized in a conference “sequence” model

- Any combinations of above





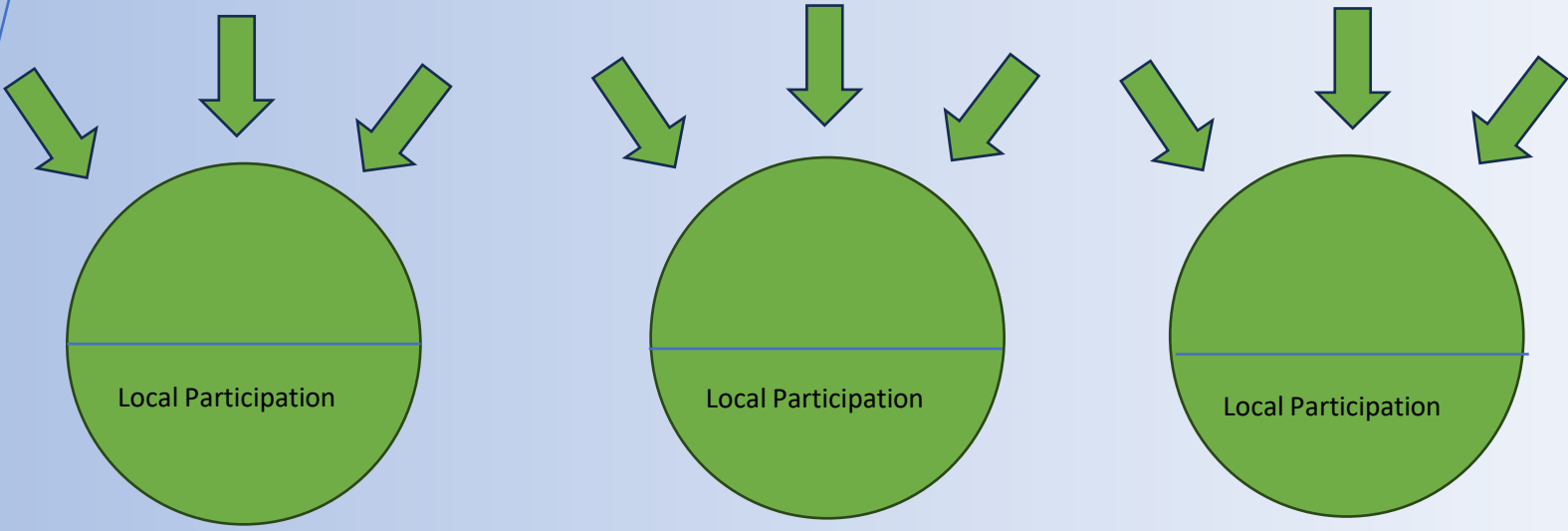
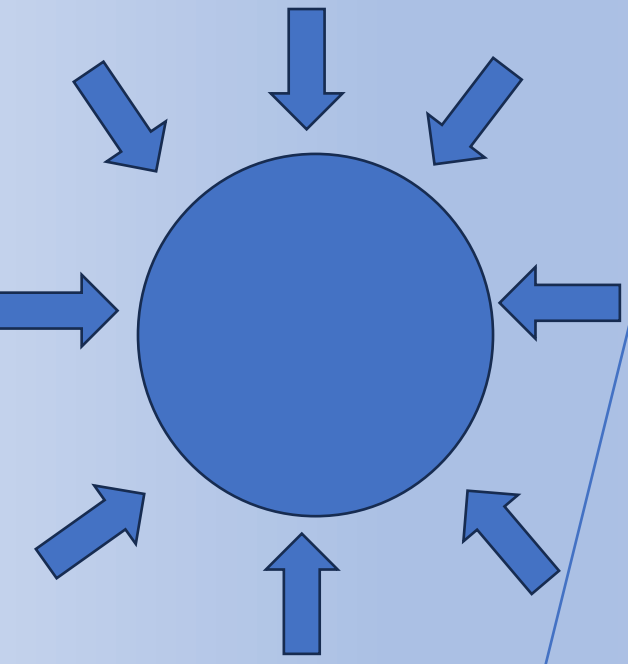
GALESS Conference policies:

Quality Conference – general
Quality Research Work
“Continent Policy”
Green Message - Footprint
All nationalities included
Virtual Extensions

- Local schools involvement – conference footprint
- 27/28 : Close eye on wrong use AI : AI generated reports
- Goal: Extension GALESS Jury Board. Background expertise – availability
- More different news-items in newsletters from GALESS AC members, thematic newsletters. From 2 to 3-5 newsletters per year.



GALESS Conferences : Footprint reduction -40 %



Reaching out for organizing GALESS Conferences on different continents in timeline of 3 years:
90 % coverage regarding 2 conferences in 3 years on the same continent



GALESS Logistics & Finances

Logistics:

- Frontdesk : The Netherlands
- Certificate production arranged either centrally or on spot. GALESS system
- Year-bookproduction from The Netherlands
- Communication: Zoom platform, Teams, WhatsApp, WeChat
- Cloud facilities with support of GALESS network-access -assets

Finances:

GALESS: volunteer-organisation, no formal status.

- GALESS CA fee: Eur 60,00 pp Conference Admission
- Edu - @vice, fees, collected by way of Frontdesk-invoice
- Small budget facilities from 2027 & onwards

